

Commerce Today

Monthly Critical Commodities Bulletin

Weeks of 26 May-June 26, 2016

Contact Details:

info@moci.gov.lr

or

Visit our website at:

www.moci.gov.lr

www.facebook.com/mociliberia

Consumer Hotlines:

Lonestar - 9911

Cellcom - 6624

Novafone - 991

Next Report

Publication Date

June 26, 2016

Data collected by the
Price Analysis and
Marketing Division

Ministry of Commerce and Industry

The Commerce Today Monthly Critical Commodities Bulletin is a product of the Ministry of Commerce and Industry developed to inform the public on key commodities inventory and pricing on a monthly basis. The data reported is gathered based on assessment of import documents, which include commercial invoice, assessment notice, single administrative document, clean report of findings, and targeted market sample surveys.

The below analyzed prices are contingent on inflation, exchange rate, import duties, shipping costs, insurance, licensing and registration fees and other administrative overheads.

Major Commodities Summary

Rice

- **Current Warehouse Stock:** 54,890.375 MT or 2,194,029 (25 kg bags)
- **Current Monthly Consumption:** 29,168.81 MT or 1,166,725.50 (25kg bags) Up to July 17, 2016
- **Pending Orders:** 20,000 MT or 800,000 (25kg bags) June 5, 2016
- **Average of Invoices/Jan.- April: Indian Parboiled Rice 5% Broken:** \$415.56 (FOB) MT; \$10.38 (25KG Bag), Analyzed Wholesale Price \$22.61; Analyzed Retail Price \$23.11
- **Global FAO Prices: Indian Parboiled Rice 5% Broken:** 369.25 (FOB) MT; \$9.23 (25KG Bag), Analyzed Wholesale Price \$20.95; Analyzed Retail Price \$21.45
- **Global FAO Prices (Indian Parboiled Rice 100% Broken):** \$373 (FOB) MT; \$9.33 (25KG Bag), Analyzed Wholesale Price \$21.06; Analyzed Retail Price \$21.56
- **Recommended Wholesale Prices:** 100% Broken Sortexed Rice: \$14.00; 5% Broken Sortexed Rice: \$16.00
- **Recommended Urban Retail Prices:** 100% Broken Sortexed Rice: \$14.50; 5% Broken Sortexed Rice: \$16.50
- **Recommended Regional Margins for Rice:** Central: 1.31; Eastern: 0.79; Western: 1.66; Southeast: 3.78

Petroleum

- **Current Stock: Gasoline (PMS):** 19,314.36 MT (6,760,026 gallons); **Diesel (AGO):** 24,203.55 MT (7,430,489 gallons); **Jet A-1:** 2,232 MT (714,548 gallons) Average 52 days
- **Current Monthly Consumption: PMS:** 12,857.14 MT; **AGO:** 9,771.99 MT and **Jet A-1:** 8,156.25 MT
- **Pending Orders (Confirmed): AGO:** 6,993.710 MT; **PMS:** 9,000 MT

Commerce Today

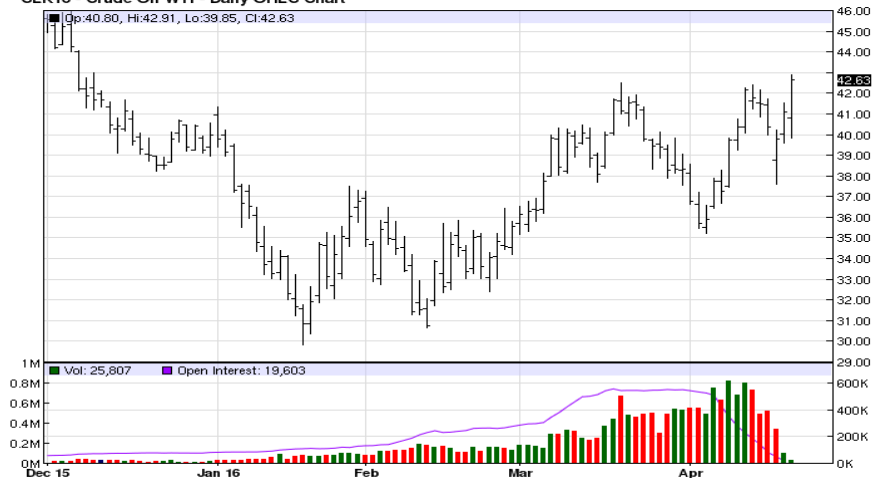
Monthly Critical Commodities Bulletin

Petroleum Prices	Wholesale / Retail	Gasoline (PMS)	Fuel Oil (AGO)
Data based on international Platts Energy Company's publication, CBL's end-of-period rate (US\$1 to L\$92) and Liberia's markup regime.	Wholesale Selling Price	US\$2.78	US\$2.80
	Retail Pump Price	US\$2.96/ LD\$270.00	US\$2.98/ LD\$275.00
	Jet A1/ HF0	US\$3.14	US\$553.85/MT

Petroleum Prices in the ECOWAS Region	Gasoline Prices, US Gallon(US\$)
Global Average	\$3.66
Guinea	\$4.18
Ivory Coast	\$3.73
Sierra Leone	\$3.28
Ghana	\$3.34
Nigeria (Oil Producer)	\$1.58
Liberia	\$2.81

Source: globalpetroleumprice.com

CLK16 - Crude Oil WTI - Daily OHLC Chart

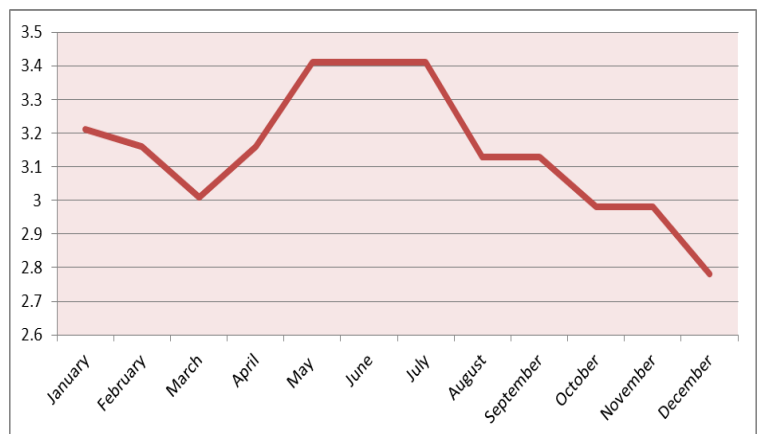


Source: www.globalpetroleumprice.com Global oil prices trend:

Jan. 2015- 2016

Local Production - Private Sector Spotlight

Company:	Eva's Traditional Arts
Product	Arts Crafts
Type	Arts Works
Price	N/A
Summary:	Eva's Traditional Art is a Liberian MSME business involved in arts and crafts works on the local market. Eva's Traditional Arts is located on OldRoad, Gayetown.
Contact Info.:	Eva Paye 0886-430-448



Source: Liberian Gasoline Price: MoCI Circulars: Jan-Dec. 2015

Information Corner

NOTE:

1. Import Request Form (IRF) is processed at BIVAC.
2. Import Permit Declaration (IPD) is processed at the Ministry of Commerce and Industry. The processing time is 48 hours.