

Commerce Today

Monthly Critical Commodities Bulletin

Weeks of 26 August-September 26, 2018

Contact Details:

info@moci.gov.lr

or visit our website
at:

www.moci.gov.lr

or Facebook at:

www.facebook.com/mociliberia

Consumer

Hotlines:

Lonestar - 9911

Cellcom - 6624

Novafone - 991

Data collected by
the Price Analysis &
Marketing Division

Ministry of Commerce and Industry

The Commerce Today Monthly Critical Commodities Bulletin is a product of the Ministry of Commerce and Industry developed to inform the public on key commodities inventory and pricing on a monthly basis. The data reported is gathered based on assessment of import documents, which include commercial invoice, assessment notice, single administrative document, clean report of findings, and targeted market sample surveys.

Rice Summary

Current Warehouse Stock of imported rice

- 82,815.80 MT or 3,312,632 bags of 25kg

Current Monthly Consumption

- 29,168.812 MT or 1,166,752.50 bags of 25kg
- Warehouse stock lasts until early December 2018

Pending Orders

- 40,360 MT or 1,614,400 bags of 25kg

Prices

- **Recommended Wholesale Prices:** 100% Broken Sortexed Rice: \$12.00; 5% Broken Sortexed Rice: \$13.50
- **Recommended Urban Retail Prices:** 100% Broken Sortexed Rice: \$12.00; 5% Broken Sortexed Rice: \$13.50
- **Recommended Regional Margins for Rice:** Central: 1.31; Eastern: 0.79; Western: 1.66; Southeast: 3.78

Petroleum Summary

Current Warehouse Stock

- **Gasoline (PMS):** 17,229.73 MT (6,030,406 gallons)
- **Diesel (AGO):** 17,290.07 MT (5,308.052 gallons)
- **Jet A-1:** 1,497.39MT (479,164.80 gallons)

Current Monthly Consumption

- **PMS:** 12,857.14 MT; **AGO:** 8,571.42 MT; **Jet A-1:** 271.88 MT

Pending Orders

- **AGO:** 3,300 MT; **PMS:** 5,160 MT

Prices per Gallon

- **Retail Price:** **PMS:** US\$ 3.55 / LD\$ 540.00; **AGO:** US\$ 3.70 / LD\$ 560.00

Commerce Today

Monthly Critical Commodities Bulletin

Petroleum Profile

Petroleum Prices		
Wholesale / Retail	Gasoline (PMS)	Fuel Oil (AGO)
Wholesale Selling Price	US\$3.51	US\$3.61
Retail Pump Price	US\$3.55/ LD\$540.00	US\$3.70 LD\$560.00

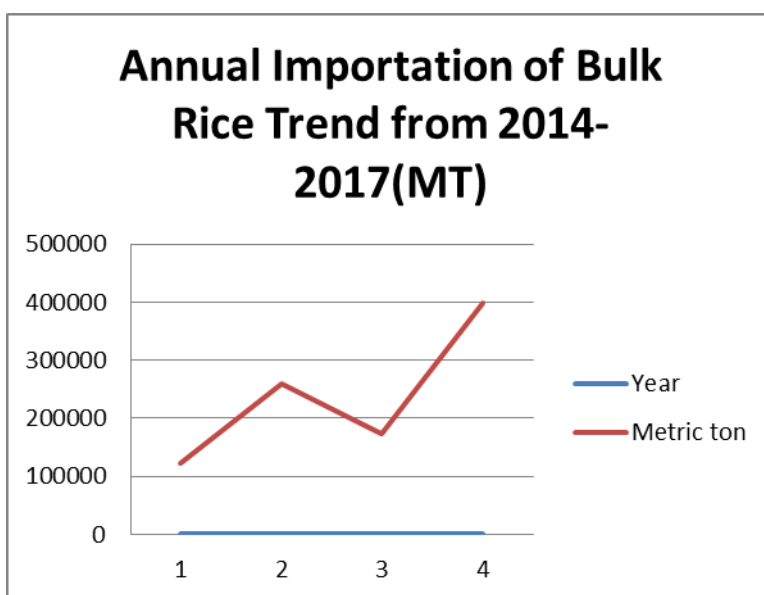
Note: data based on international Platts Energy Company's publication, CBL's end-of-period rate (US\$1 to L\$152.00) and Liberia's markup regime.

Transportation corner

Broad Street to:

	Bus	Taxi
Vai Town	10	15
Clara Town	15	20
Freeport	15	20
Jamaica Road Junction	20	25
Logan Town	20	30
Bong Mines Bridge	25	30
Duala	30	40
Monrovia Breweries	30	40
St. Paul Bridge	35	50
Cemenco Community	20	25

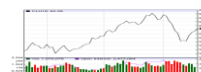
IMPORTED RICE 2014-2017



Local Retail prices of rice on the market	Rice Price 25 KG (US\$)
Average Price	\$13.50
Bellaluna IR-64	\$13.50
IR-64 Blue bag	\$13.50
Indian Parboiled pink	\$13.50
Indian Parb. Mario	\$13.50
Indian Parb. Horse	\$13.50

Source: www.livericeindex.com

MAJOR PLAYERS SWAT, UCI, K&K, Fouta, Mila, Fouani & Fahmah



Volume 3 issue 8

Commerce Today

Monthly Critical Commodities Bulletin