

# Commerce Today

## Monthly Critical Commodities Bulletin

Weeks of 26 September-October 26, 2016

### Contact Details:

[info@moci.gov.lr](mailto:info@moci.gov.lr)

or

### Visit our website at:

[www.moci.gov.lr](http://www.moci.gov.lr)

[www.facebook.com/mociliberia](http://www.facebook.com/mociliberia)

### Consumer Hotlines:

Lonestar - 9911

Cellcom - 6624

Novafone - 991

### Next Report

### Publication Date

October 26, 2016

Data collected by the  
Price Analysis and  
Marketing Division

### Ministry of Commerce and Industry

The Commerce Today Monthly Critical Commodities Bulletin is a product of the Ministry of Commerce and Industry developed to inform the public on key commodities inventory and pricing on a monthly basis. The data reported is gathered based on assessment of import documents, which include commercial invoice, assessment notice, single administrative document, clean report of findings, and targeted market sample surveys.

The below analyzed prices are contingent on inflation, exchange rate, import duties, shipping costs, insurance, licensing and registration fees and other administrative overheads.

### Major Commodities Summary

#### Rice

- **Current Warehouse Stock:** 23,660.05 MT or 946,426(25 kg bags)
- **Current Monthly Consumption:** 29,168.81MT or 1,166,725.50 (25kg bags) Up to October 10, 2016
- **Pending Orders:** 33,500 MT or 1,340,000 (25kg bags) October 20,2016
- **Average of Invoices/April-June: Indian Parboiled Rice 5% Broken:** \$415.56 (FOB) MT; \$10.38 (25KG Bag), Analyzed Wholesale Price \$22.61; Analyzed Retail Price \$23.11
- **Global FAO Prices: Indian Parboiled Rice 5% Broken:** 369.25 (FOB) MT; \$9.23 (25KG Bag), Analyzed Wholesale Price \$20.95; Analyzed Retail Price \$21.45
- **Global FAO Prices (Indian Parboiled Rice 100% Broken):** \$373 (FOB) MT; \$9.33 (25KG Bag), Analyzed Wholesale Price \$21.06; Analyzed Retail Price \$21.56
- **Recommended Wholesale Prices:** 100% Broken Sortexed Rice: \$14.00; 5% Broken Sortexed Rice: \$16.00
- **Recommended Urban Retail Prices:** 100% Broken Sortexed Rice: \$14.50; 5% Broken Sortexed Rice: \$16.50
- **Recommended Regional Margins for Rice:** Central: 1.31; Eastern: 0.79; Western: 1.66; Southeast: 3.78

#### Petroleum

- **Current Stock: Gasoline (PMS):** 15,632.57MT (5,471,398 gallons); **Diesel (AGO):** 6,325.612 MT (20,604.60 gallons); **Jet A-1:** 2,232MT (714,548 gallons) Average 66days
- **Current Monthly Consumption: PMS:** 12,857.14 MT; **AGO:** 9,771.99MT and **Jet A-1:** 8,156.25MT
- **Pending Orders (Confirmed): AGO:** 10,000MT; **PMS:** 13,694.89MT

# Commerce Today

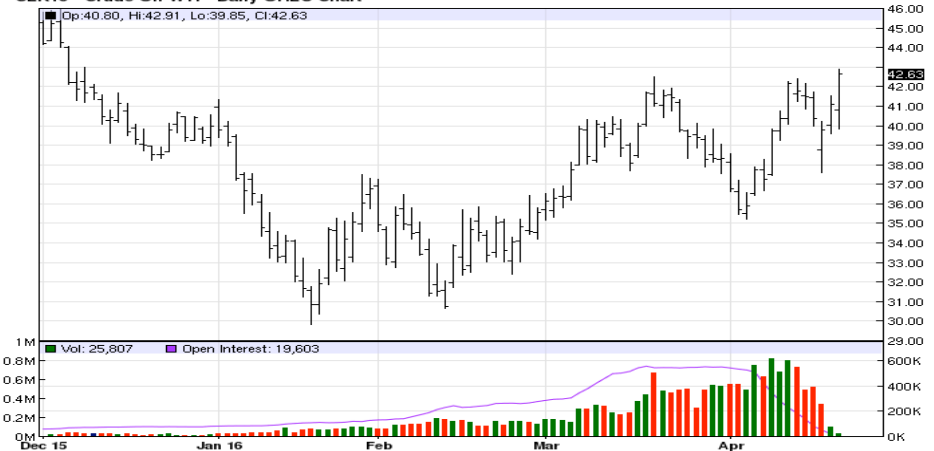
## Monthly Critical Commodities Bulletin

Petroleum Prices	Wholesale / Retail	Gasoline (PMS)	Fuel Oil (AGO)
Data based on international Platts Energy Company's publication, CBL's end-of-period rate (US\$1 to L\$98) and Liberia's markup regime.	Wholesale Selling Price	US\$2.83	US\$2.80
	Retail Pump Price	US\$3.01/ LD\$295.00	US\$2.98/ LD\$290.00

Petroleum Prices in the ECOWAS Region	Gasoline Prices, US Gallon(US\$)
Global Average	\$4.90
Guinea	\$4.70
Ivory Coast	\$4.70
Ghana	\$4.55
Sierra Leone	\$3.20
Liberia	\$3.01
Nigeria (Oil Producer)	\$2.25

Source: [globalpetrolprice.com](http://globalpetrolprice.com)

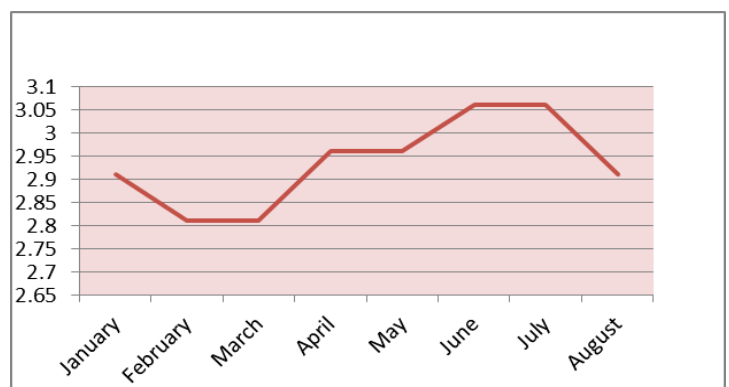
CLK16 - Crude Oil WTI - Daily OHLC Chart



Source: [www.globalpetroleumprice.com](http://www.globalpetroleumprice.com) Global

### Local Production - Private Sector Spotlight

Company:	Falama Inc.	
Product	Cassava Chip and Cassava flour	
Unit	500G	350G
Price	US\$4.00	US\$3.00
Summary:	Falama Inc. is a Liberian MSME business involved in the processing and packaging of locally produced cassava chip and cassava flour. This business is model for MSME development, as highlighted in the Ministry of Commerce MSME Directory	
Contact Info.:	Congo Town 0777512940	



Source: Liberian Gasoline Price: MoCI Circulars: Jan-Aug.2016

### Information Corner

#### NOTE:

1. Import Request Form (IRF) is processed at BIVAC.
2. Import Permit Declaration (IPD) is processed at the Ministry of Commerce and Industry. The processing time is 48 hours.
3. Rice: Wholesale Margin: 0.50¢; Retailer's Margin: 0.50¢