

# Commerce Today

## Monthly Critical Commodities Bulletin

Weeks of 26 December-January 26, 2017

### Contact Details:

[info@moci.gov.lr](mailto:info@moci.gov.lr)

or

### Visit our website at:

[www.moci.gov.lr](http://www.moci.gov.lr)

[www.facebook.com/mociliberia](http://www.facebook.com/mociliberia)

### Consumer Hotlines:

Lonestar - 9911

Cellcom - 6624

Novafone - 991

### Next Report

### Publication Date

January 26, 2017

Data collected by the  
Price Analysis and  
Marketing Division

### Ministry of Commerce and Industry

The Commerce Today Monthly Critical Commodities Bulletin is a product of the Ministry of Commerce and Industry developed to inform the public on key commodities inventory and pricing on a monthly basis. The data reported is gathered based on assessment of import documents, which include commercial invoice, assessment notice, single administrative document, clean report of findings, and targeted market sample surveys.

*The below analyzed prices are contingent on inflation, exchange rate, import duties, shipping costs, insurance, licensing and registration fees and other administrative overheads.*

### Major Commodities Summary

#### Rice

- **Current Warehouse Stock:** 70,528.175 MT or 2,821,127 kg bags)
- **Current Monthly Consumption:** 29,168.81MT or 1,166,725.50 (25kg bags) Up to March 12,2017
- **Pending Orders:** 1,000 MT or 40,000 (25kg bags) March 2,,2017
- **Average of Invoices/April-June: Indian Parboiled Rice 5% Broken:** \$415.56 (FOB) MT; \$10.38 (25KG Bag), Analyzed Wholesale Price \$22.61; Analyzed Retail Price \$23.11
- **Global FAO Prices: Indian Parboiled Rice 5% Broken:** 369.25 (FOB) MT; \$9.23 (25KG Bag), Analyzed Wholesale Price \$20.95; Analyzed Retail Price \$21.45
- **Global FAO Prices (Indian Parboiled Rice 100% Broken):** \$373 (FOB) MT; \$9.33 (25KG Bag), Analyzed Wholesale Price \$21.06; Analyzed Retail Price \$21.56
- **Recommended Wholesale Prices:** 100% Broken Sortexed Rice: \$14.00; 5% Broken Sortexed Rice: \$16.00
- **Recommended Urban Retail Prices:** 100% Broken Sortexed Rice: \$14.50; 5% Broken Sortexed Rice: \$16.50
- **Recommended Regional Margins for Rice:** Central: 1.31; Eastern: 0.79; Western: 1.66; Southeast: 3.78

#### Petroleum

- **Current Stock: Gasoline (PMS):** 18,598.95MT (6,509,632.50 gallons); **Diesel (AGO):** 15,742.53 MT (4,832,956.71 gallons); **Jet A-1:** 3,000MT (960,000 gallons) Average 11days
- **Current Monthly Consumption: PMS:** 12,857.14 MT; **AGO:** 9,771.99MT and **Jet A-1:** 271.88MT
- **Pending Orders (Confirmed): AGO:** 2,000MT; **PMS:** 5,000MT

# Commerce Today

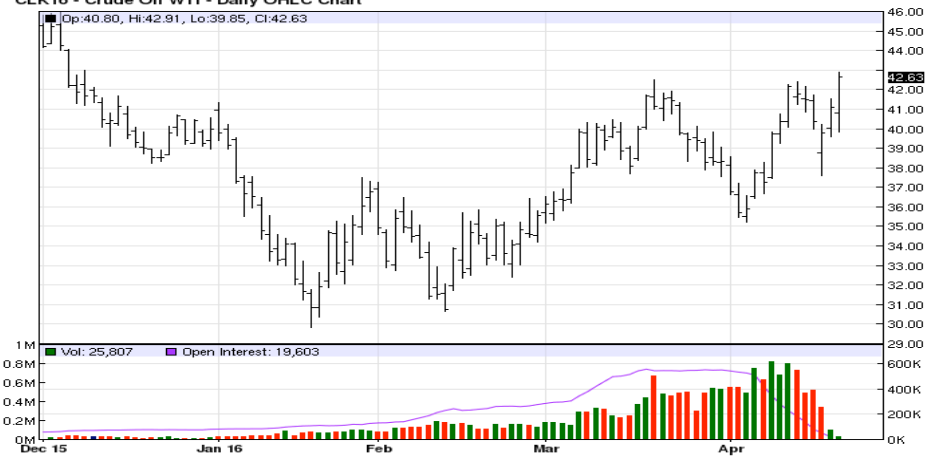
## Monthly Critical Commodities Bulletin

Petroleum Prices	Wholesale / Retail	Gasoline (PMS)	Fuel Oil (AGO)
Data based on international Platts Energy Company's publication, CBL's end-of-period rate (US\$1 to L\$103) and Liberia's markup regime.	Wholesale Selling Price	US\$2.98	US\$2.95
	Retail Pump Price	US\$3.16/ LD\$325.00	US\$3.13/ LD\$320.00

Region/Country	Gasoline Price, US Gallon(US\$)
Global Average	\$5.05
Guinea	\$4.80
Ivory Coast	\$4.60
Ghana	\$4.85
Sierra Leone	\$3.30
Liberia	\$3.16
Nigeria (Oil Producer)	\$2.25

Source: [globalpetrolprice.com](http://globalpetrolprice.com)

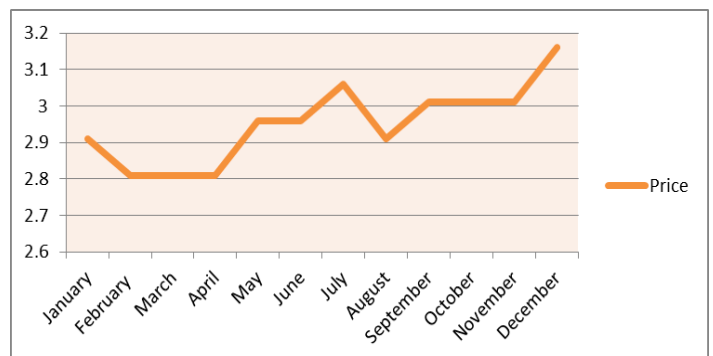
CLK16 - Crude Oil WTI - Daily OHLC Chart



Source: [www.globalpetroleumprice.com](http://www.globalpetroleumprice.com)

### Local Production - Private Sector Spotlight

Company:	Pasama Agriculture & Trading	
Product	Palm & Kernel Oil	
Unit	Container	22liter
Price	LD 1,800.00	Per container
Summary:	Pasama Agriculture & Trading is a Liberian local MSME business involved in the production and sale of local palm and kernel oil on the local market.	
Contact Info.:	0886581980 or 0777581980	



Source: Liberian Gasoline Price: MoCI Circulars: January-November 2016

### Information Corner

#### NOTE:

1. Import Request Form (IRF) is processed at BIVAC.
2. Import Permit Declaration (IPD) is processed at the Ministry of Commerce and Industry. The processing time is 48 hours.